

**The next-generation transition space in Meyrin Vernier.**



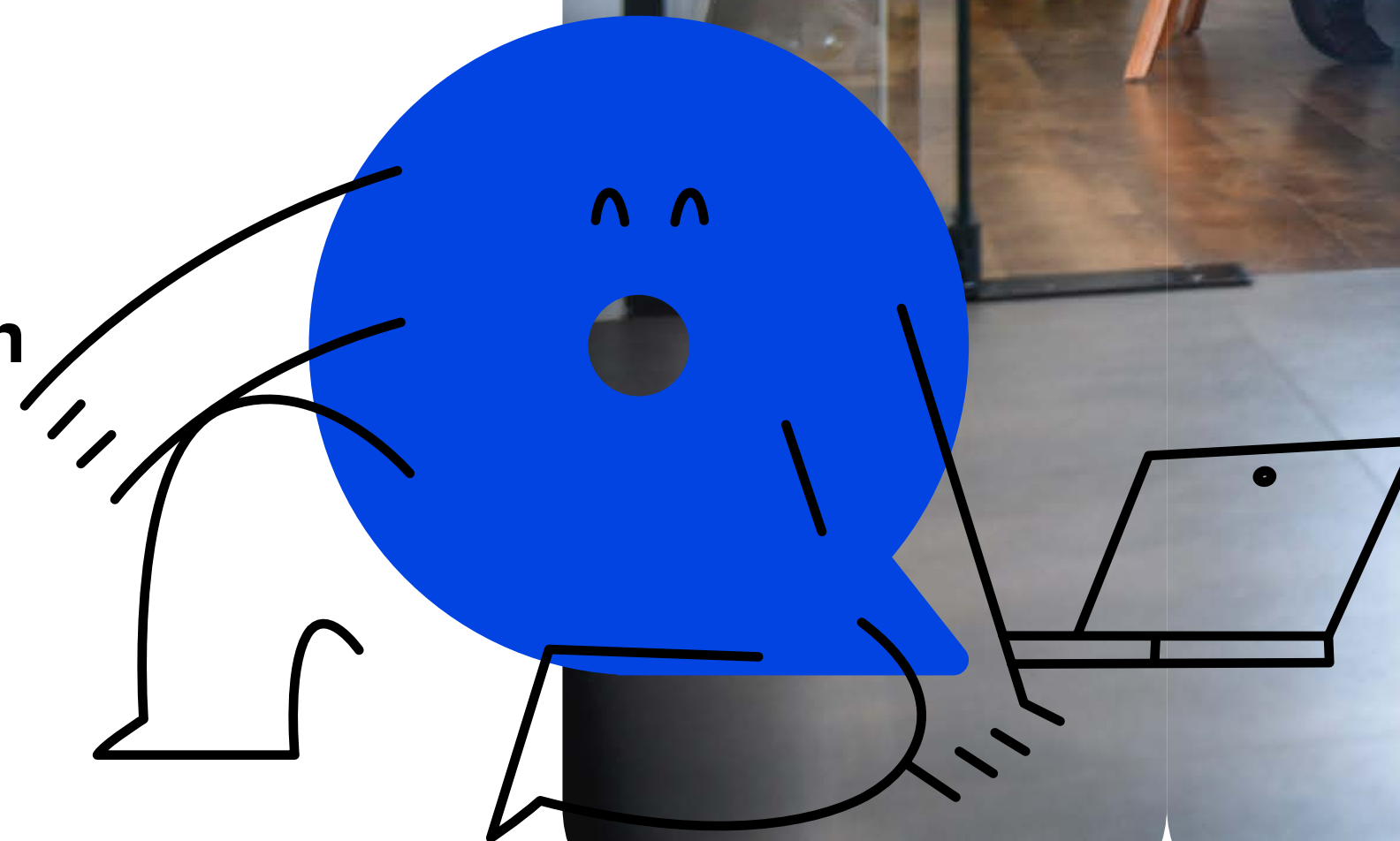
# Innovative flexibility for businesses on the move.

Discover an innovative workspace, halfway between a traditional office and coworking, designed for businesses in transition or growth.

**5,140 sq m** of modular space

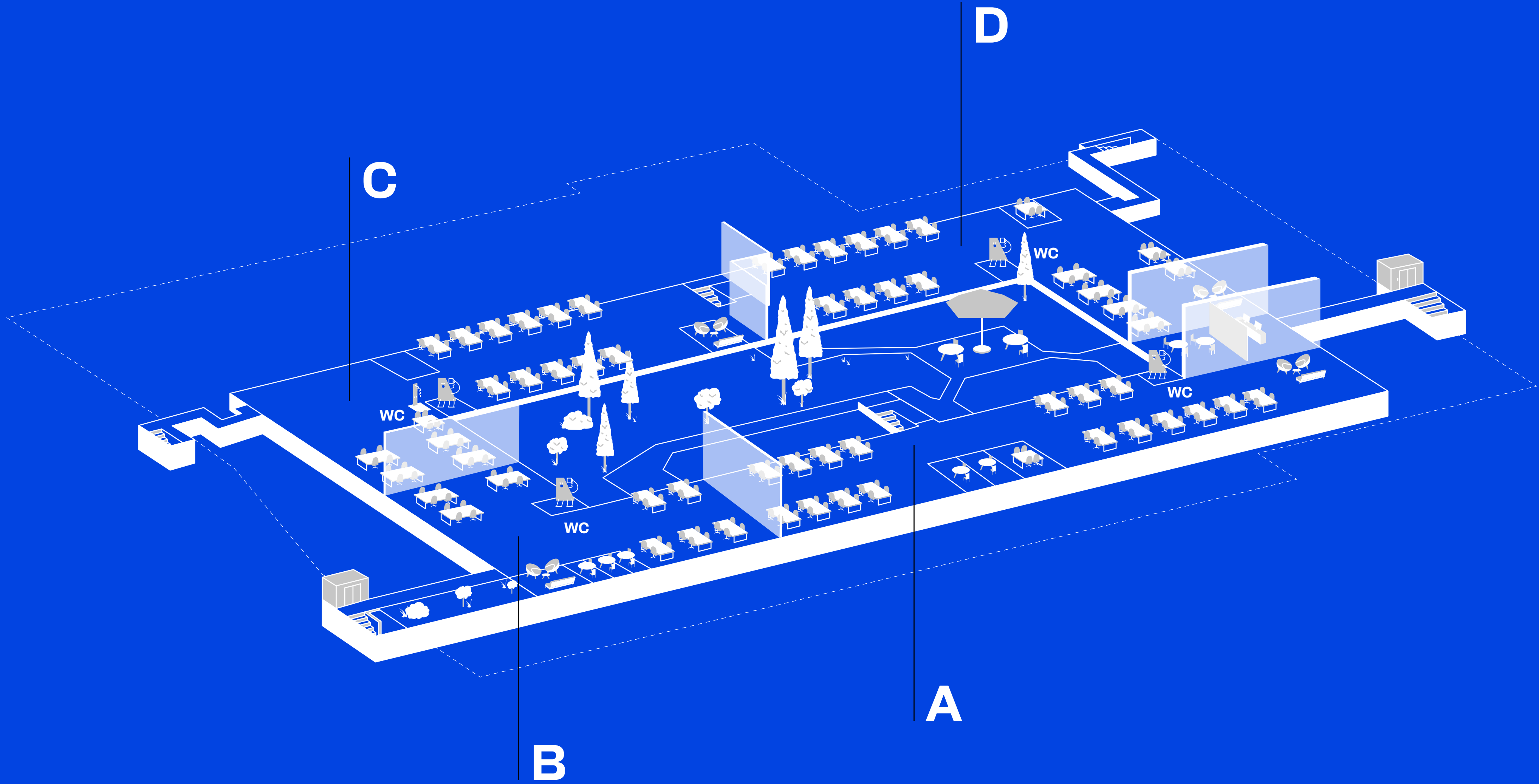
**900-1,400 sq m**  
4 units

Up to **360**  
ready-to-use workstations





# Floor plan.



**A**  
1,407 sq m

**B**  
876 sq m

**C**  
1,393 sq m

**D**  
1,309 sq m

# Work ready solutions – onsite services & well-being.

Fully equipped, connected, and operational spaces:

- High-speed internet
- Professional furnishings
- Amenities in each unit



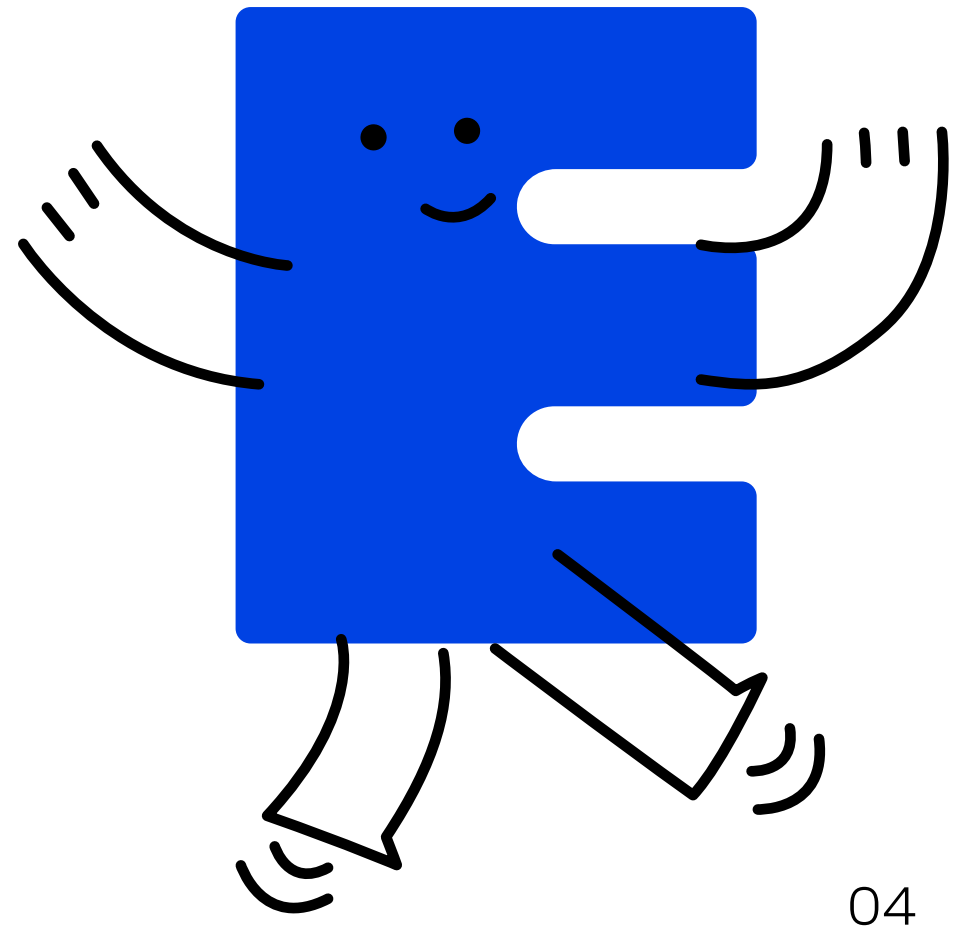
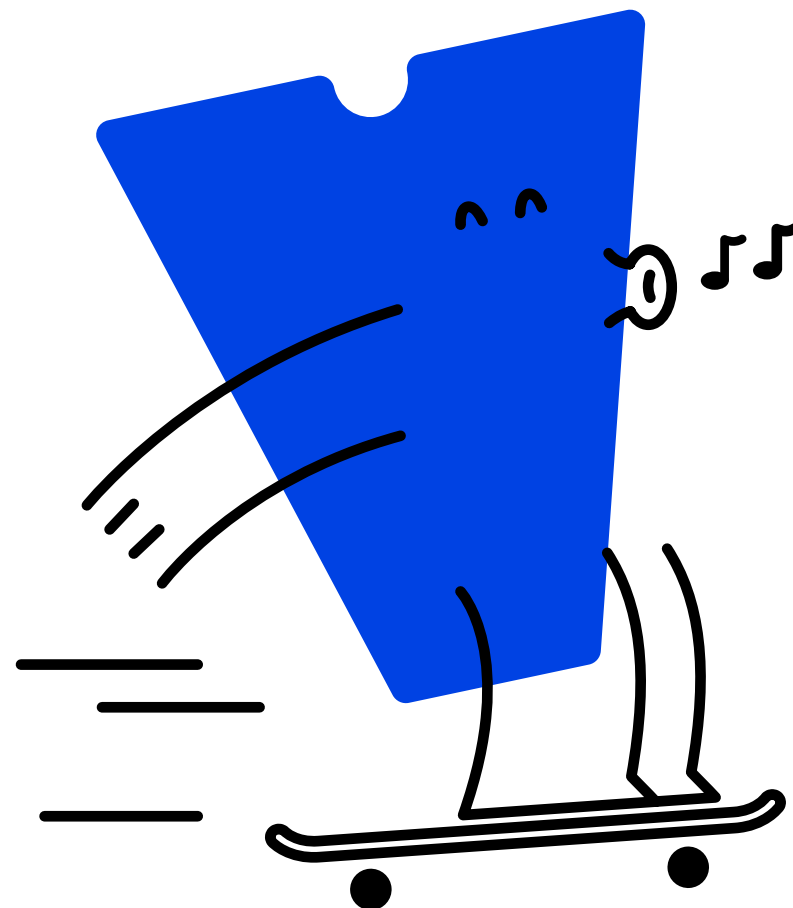
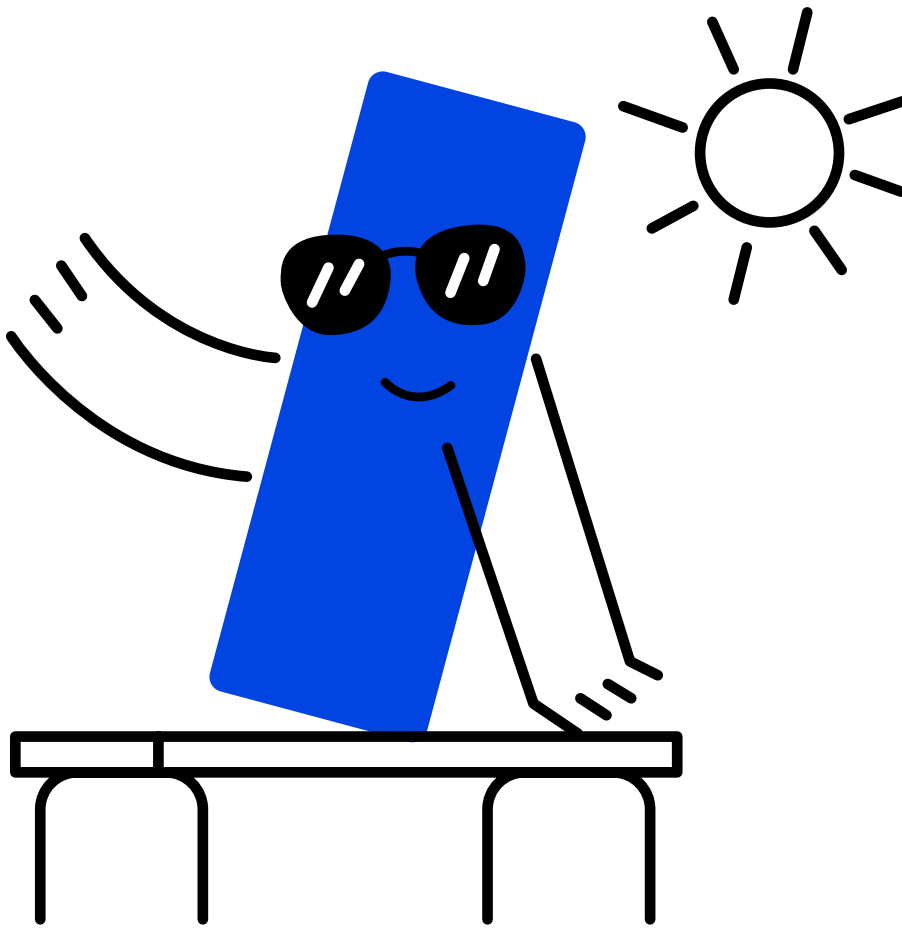
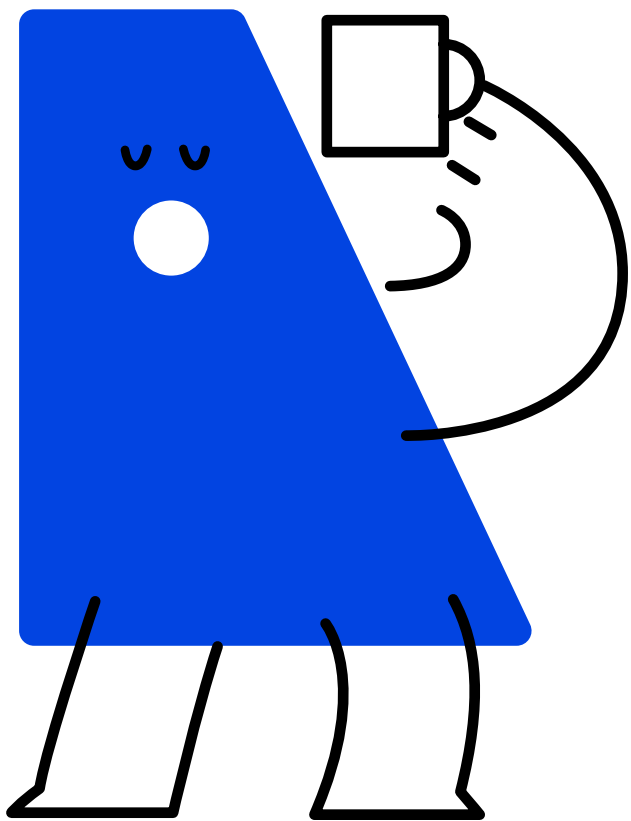
**IKEA cafeteria**  
offering varied and affordable meals

**Private kitchenettes**

**Outdoor terrace**  
for relaxation

**Green spaces**  
and parks nearby

**2 fitness centers**  
within walking distance





# Hyperconnected.

Located above IKEA Meyrin-Vernier, Eureka offers seamless connectivity:

- Accessible by car, train, tram or bus
- Just minutes from Geneva Airport



# Questions? Get in touch.



**Grégoire Marra**

Senior Advisor - Commercial Leasing  
+41 22 319 88 17  
marra@comptoir-immo.ch



**Ronit Salama**

Courtière Senior  
+41 22 979 34 23  
ronit.salama@barnes-commercial.com

